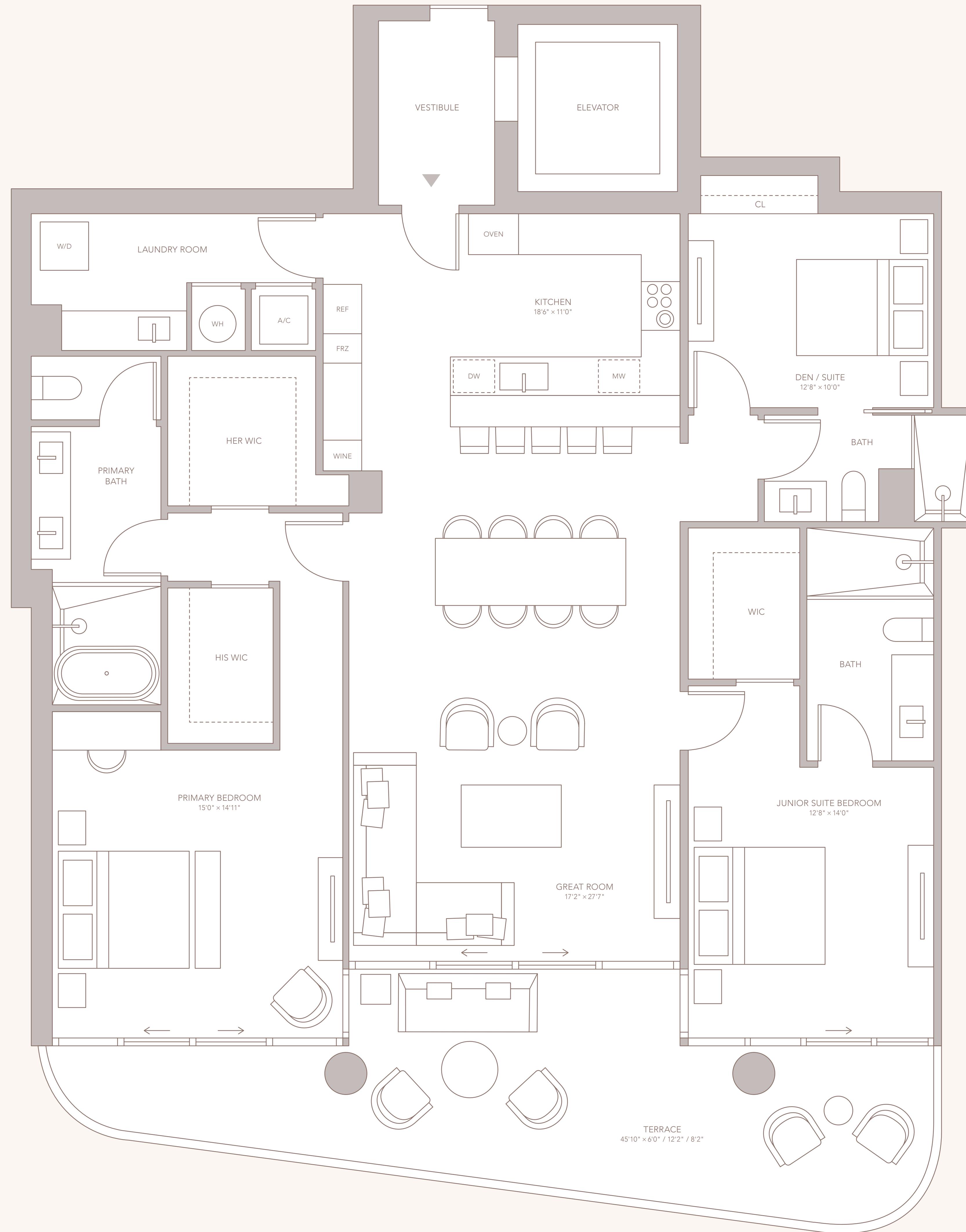


# OCEAN HOUSE

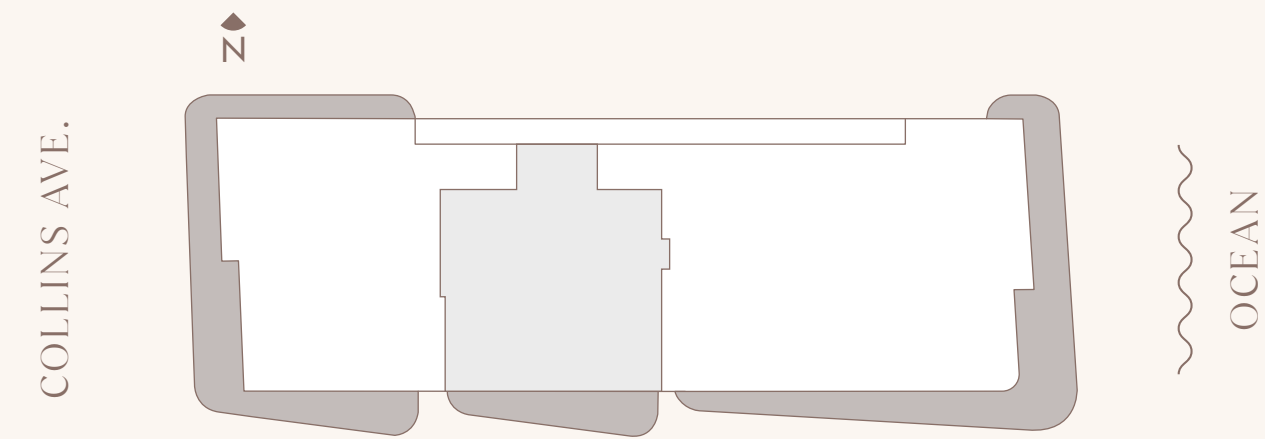
SURFSIDE

RESIDENCE 02 FLOORS 3-9  
2 BEDROOMS  
3 BATHROOMS  
DEN / SUITE  
INTERIOR: 2,093-2,134 SF  
EXTERIOR: 404 SF  
TOTAL: 2,497-2,538 SF



CITY & BAY VIEWS

ATLANTIC OCEAN



# OCEAN HOUSE

SURFSIDE

FUTURE RESIDENCES LOCATED AT:  
9309-9317 Collins Avenue  
Surfside, FL 33154

OceanHouseResidences.com  
Info@OceanHouseResidences.com

## The Team

VISIONARY / SALES & MARKETING  
Multiplan REAM

ARCHITECTURE & LANDSCAPE DESIGN  
Arquitectonica / ArquitectonicaGEO

INTERIORS  
Carla Guilhem Design

BRANDING & ADVERTISING  
And Partners

MULTIPLAN  
MULTIPLAN REAL ESTATE

ORAL REPRESENTATIONS CANNOT BE RELIED UPON AS CORRECTLY STATING THE REPRESENTATIONS OF THE DEVELOPER. FOR CORRECT REPRESENTATIONS, MAKE REFERENCE TO THIS BROCHURE AND TO THE DOCUMENTS REQUIRED BY SECTION 718.03, FLORIDA STATUTES, TO BE FURNISHED BY A DEVELOPER TO A BUYER OR LESSEE.

Stated square footages and dimensions are measurements of the exterior walls, including the perimeter of interior openings, walls, and doors, but do not include the square footage and dimensions that would be determined by using the description and definition of the "Unit" set forth in the Declaration of Condominium. Measurements of rooms are taken on the floor plan and are generally taken at the furthest points of each given room (as if the room were a plane rectangle) without regard for any cutouts or variations. Accordingly, the area of the actual room will typically be smaller than the product obtained by multiplying the stated length and width. All dimensions are estimates which may vary with actual construction and floor plans, specific details and other developments, plans and specifications for change and will not necessarily accurately reflect the final plans and specifications for the development. Regular closets, walk-in closets, pantry closets, linen closets, and any other room or space will not be included in the stated square footages and dimensions. The stated square footages are intended to be used only for comparison purposes and are not intended to be used for any other purpose. The necessary infrastructure will be provided for future installation by the owner. Any such installation and/or customization shall be the owner's responsibility after closing. All dimensions of appliances, counters, sinks, floor coverings, furniture and other fixtures of detail, including without limitation, items of finish and decoration, are conceptual only and are not necessarily included in each Unit. ©

RESIDENCE 02  
FLOORS 3-9  
4 BEDROOMS  
3 BATHROOMS  
DEN / SUITE  
INTERIOR: 2,093-2,134 SF  
EXTERIOR: 404 SF  
TOTAL: 2,497-2,538 SF