

OCEAN HOUSE

SURFSIDE

RESIDENCE

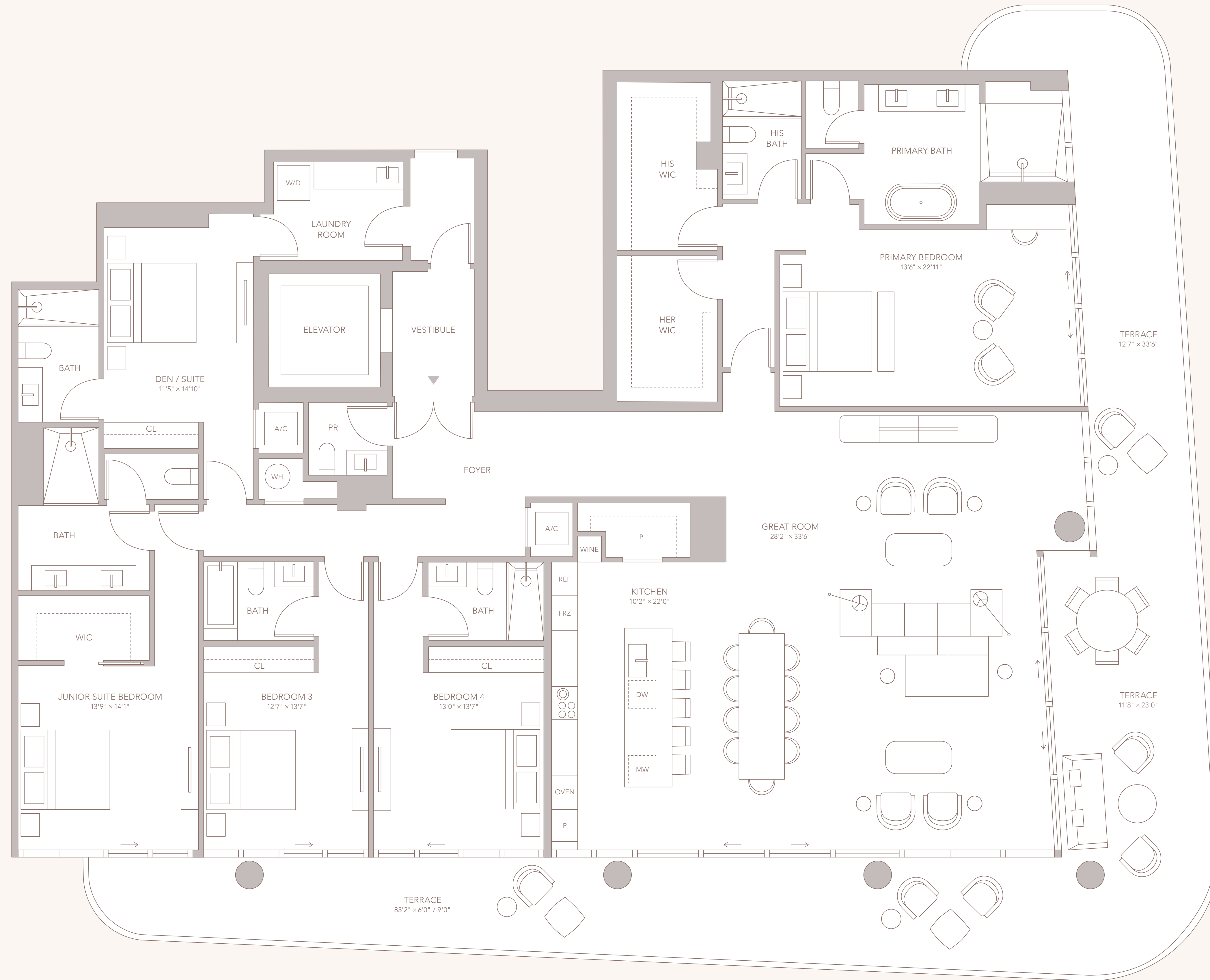
01

FLOORS

3-9

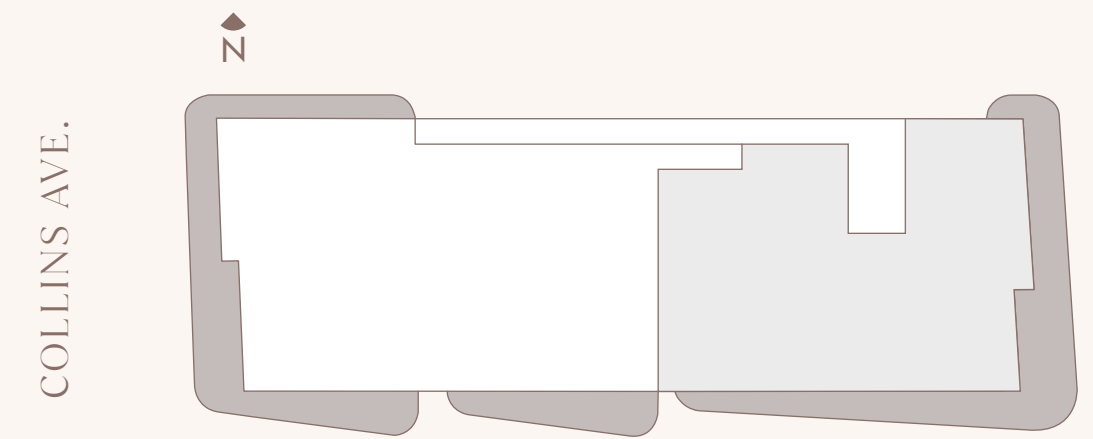
4 BEDROOMS
6 BATHROOMS
POWDER ROOM
DEN / SUITE

INTERIOR: 4,180 SF
EXTERIOR: 1,322 SF
TOTAL: 5,502 SF



CITY & BAY VIEWS

ATLANTIC OCEAN



COLLINS AVE.

OCEAN

OCEAN HOUSE

SURFSIDE

FUTURE RESIDENCES LOCATED AT:
9309-9317 Collins Avenue
Surfside, FL 33154

OceanHouseResidences.com
Info@OceanHouseResidences.com

The Team

VISIONARY / SALES & MARKETING

Multiplan REAM

ARCHITECTURE & LANDSCAPE DESIGN

Arquitectonica / ArquitectonicaGEO

INTERIORS

Carla Guilhem Design

BRANDING & ADVERTISING

And Partners

MULTIPLAN
MULTIPLAN REAL ESTATE

ORAL REPRESENTATIONS CANNOT BE RELIED UPON AS CORRECTLY STATING THE REPRESENTATIONS OF THE DEVELOPER. FOR CORRECT REPRESENTATIONS, MAKE REFERENCE TO THIS BROCHURE AND TO THE DOCUMENTS REQUIRED BY SECTION 718.03, FLORIDA STATUTES, TO BE FURNISHED BY A DEVELOPER TO A BUYER OR LESSEE.

Stated square footages and dimensions are measurements of the exterior walls, including the perimeter of interior openings, walls, and doors, but do not include the square footage and dimensions that would be determined by using the description and definition of the "Unit" set forth in the Declaration of Condominium contained in the Prospectus. Measurements of rooms are taken on the floor plan and are generally taken at the narrowest point of each given room (as if the room were a plane rectangle) without regard for any cutouts or variations. Accordingly, the area of the actual room will typically be smaller than the product obtained by multiplying the stated length and width. All dimensions are estimates which will vary with actual construction and floor plans, specifications and other development plans and are subject to change and will not necessarily accurately reflect the final plans and specifications for the development. Regular closets, walk-in closets, pantry closets, linen closets, and any other optional closets will not be included with automatic inclusion in the stated square footages. The stated square footages are intended to be used by the buyer according to their own needs after closing. Wine cellars are not included by the Developer. The views are simulated on the plans for the Residence. This house is for illustrative purposes only. The necessary infrastructure will be provided for future installation by the owner. Any such installation and/or customization shall be the owner's responsibility after closing. All dimensions of appliances, counters, sinks, floor coverings, furniture and other fixtures of detail, including without limitation, items of finish and decoration, are conceptual only and are not necessarily included in each Unit. ©

RESIDENCE 01	4 BEDROOMS	INTERIOR: 4,180 SF
FLOORS 3-9	6 BATHROOMS	EXTERIOR: 1,322 SF
	POWDER ROOM	TOTAL: 5,502 SF
	DEN / SUITE	